

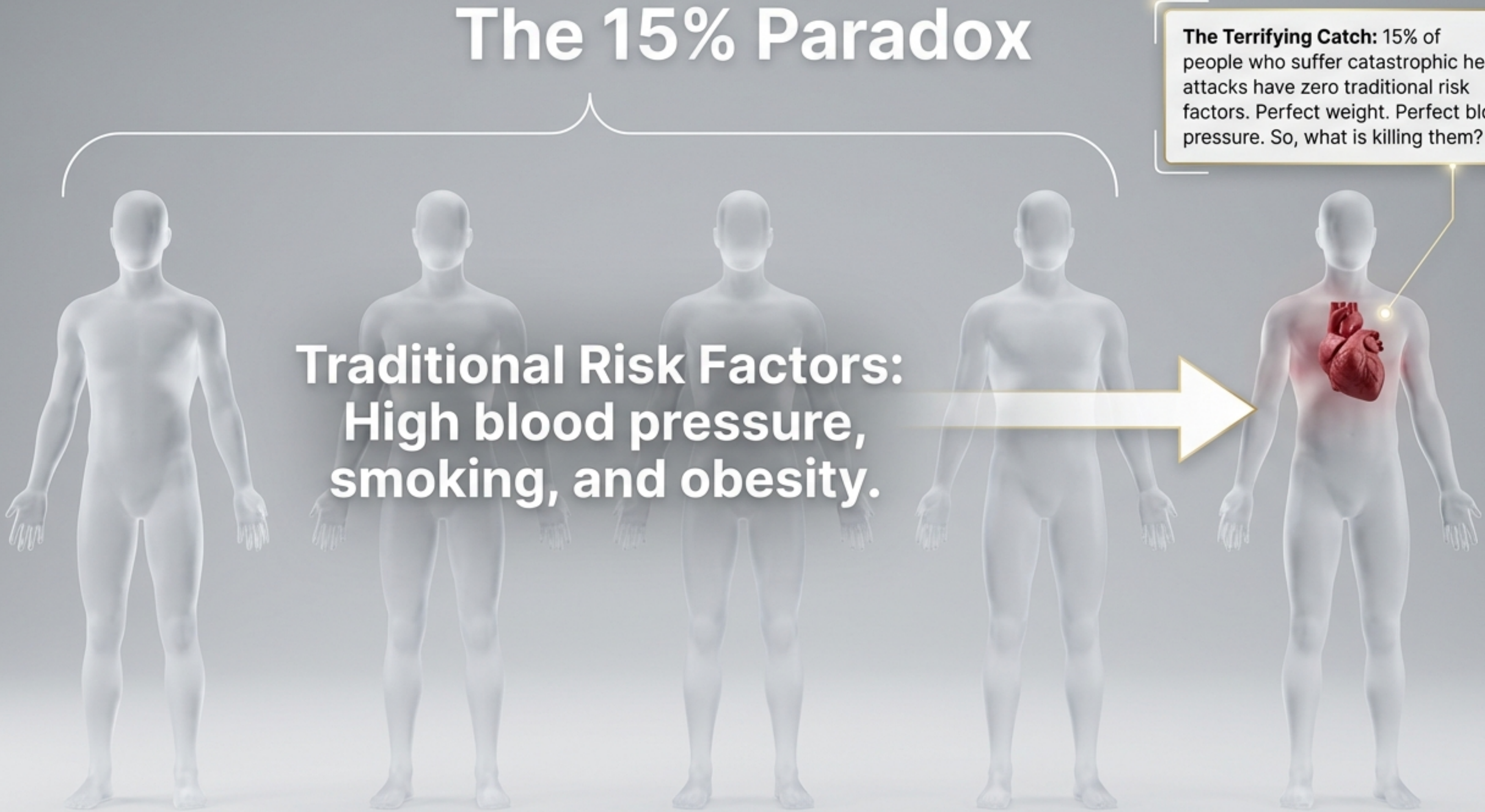
The Microscopic War: Why Your Immune System Hates Your Steak

An evolutionary ghost story hiding
on your dinner plate.



The 15% Paradox

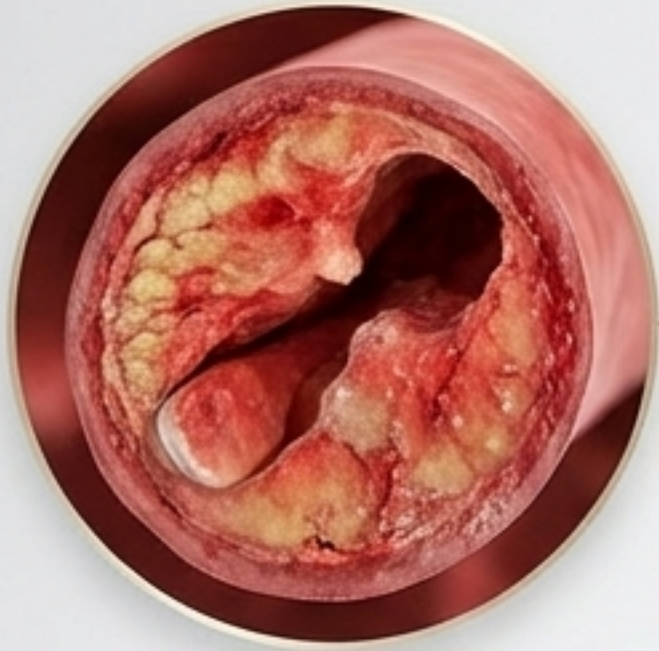
The Terrifying Catch: 15% of people who suffer catastrophic heart attacks have zero traditional risk factors. Perfect weight. Perfect blood pressure. So, what is killing them?



The diagram features five white human silhouettes in a row. A white bracket above the first four silhouettes groups them together. A large white arrow points from the fourth silhouette to the fifth. The fifth silhouette has a red heart visible in its chest, with a yellow dot on it and a yellow line connecting to a text box in the top right. The text 'Traditional Risk Factors: High blood pressure, smoking, and obesity.' is overlaid on the first four silhouettes.

**Traditional Risk Factors:
High blood pressure,
smoking, and obesity.**

The Chimpanzee Anomaly



Humans:

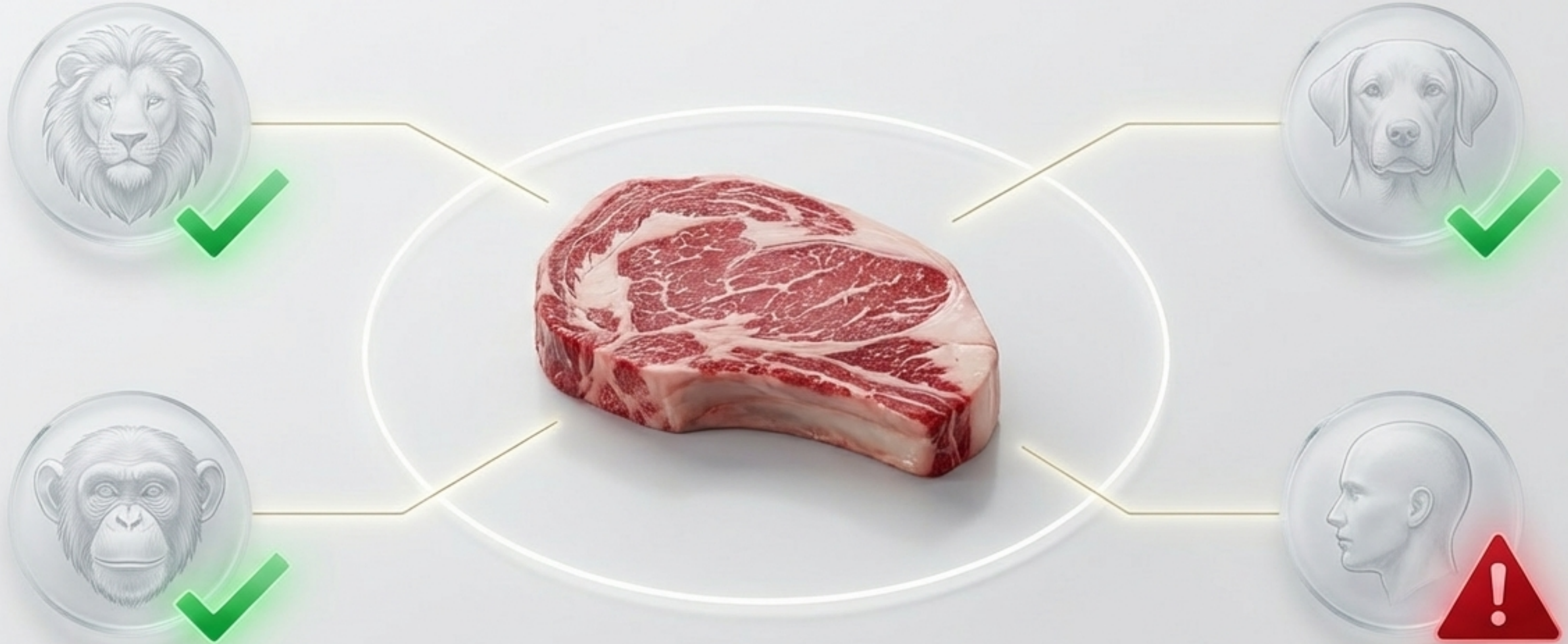
Biologically wired to self-destruct via clogged arteries.

Humans are the only mammals on Earth that suffer from **atheromatous plaque rupture**.

Chimpanzees:

Share nearly all our DNA. Even when overweight with terrible cholesterol, they never die of clogged arteries.

The Red Meat Clue



Lions, dogs, and chimps can eat massive amounts of red meat without arterial damage. When humans do, our cardiovascular risk skyrockets. Our bodies are having a completely unique, deadly reaction.

The Cellular ID Badges

Every cell in your body is covered in a dense microscopic forest of sugar molecules.

These sugars act like security ID badges. They tell your immune system's patrolling drones: "I belong here. Do not attack."



A Tale of Two Sugars

The Human Sugar (Neu5Ac)



The native cellular ID badge for modern humans.

The Animal Sugar (Neu5Gc)



The ID badge found in all other mammals. The only difference is a single extra oxygen atom.

Across the mammalian animal kingdom, these two nearly identical sugars dictate biological identity.

The Broken Gene



The CMAH Mutation

A genetic glitch shattered the factory that makes the Animal Sugar.

**2.5 Million
Years Ago**

Biological Mutants

Overnight, human ancestors lost the ability to make the Animal Sugar. We became completely covered in only the Human Sugar.

The Ultimate Trade-Off

Surviving Ancient Malaria

The parasite used the Animal Sugar as a doorway. By breaking the gene, we deleted the door and survived extinction.



Modern Heart Attacks

The biological cost of our survival.



The Diet Trap

Because our bodies no longer make the **Animal Sugar**, our immune system views it as a toxic 'Alien'.

But mammalian red meat is packed full of it.

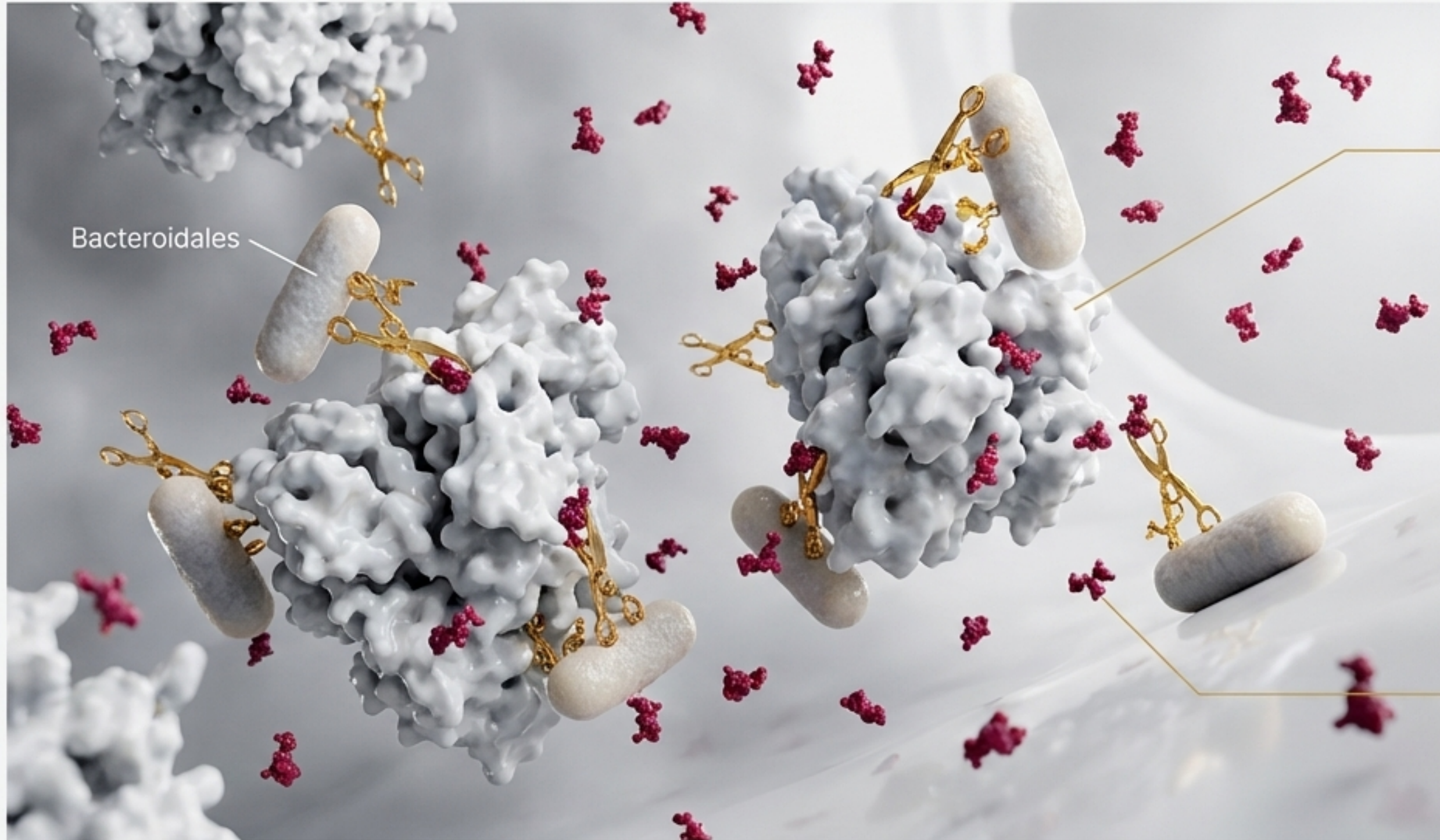
Every time we eat it, we swallow a biological invader.



Beef: 30.1 $\mu\text{g/g}$
of Alien Sugar

Pork: 25.5 $\mu\text{g/g}$
of Alien Sugar

The Gut's Little Helpers



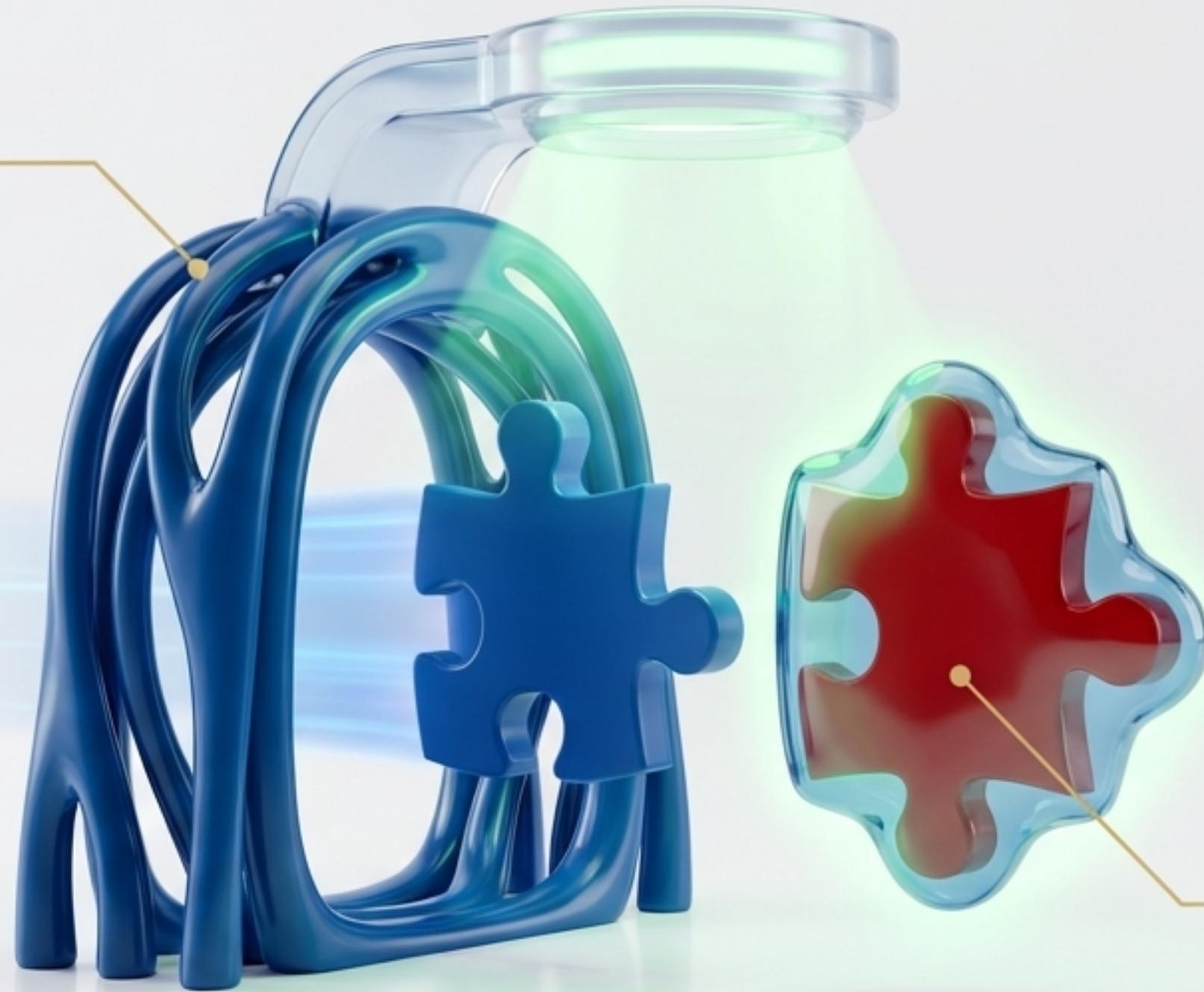
The Alien Sugar is trapped inside the meat.

But specialized bacteria in your gut possess enzymatic scissors.

They chop the Alien Sugar free, allowing it to escape the stomach and flood directly into your bloodstream.

The Blind Bouncer

Our cells constantly recycle their own sugars through a gateway called the sialin transporter.



Because the Alien Sugar looks 99% identical, the gateway is tricked. It blindly waves the toxic invader right into the heart of our cells.

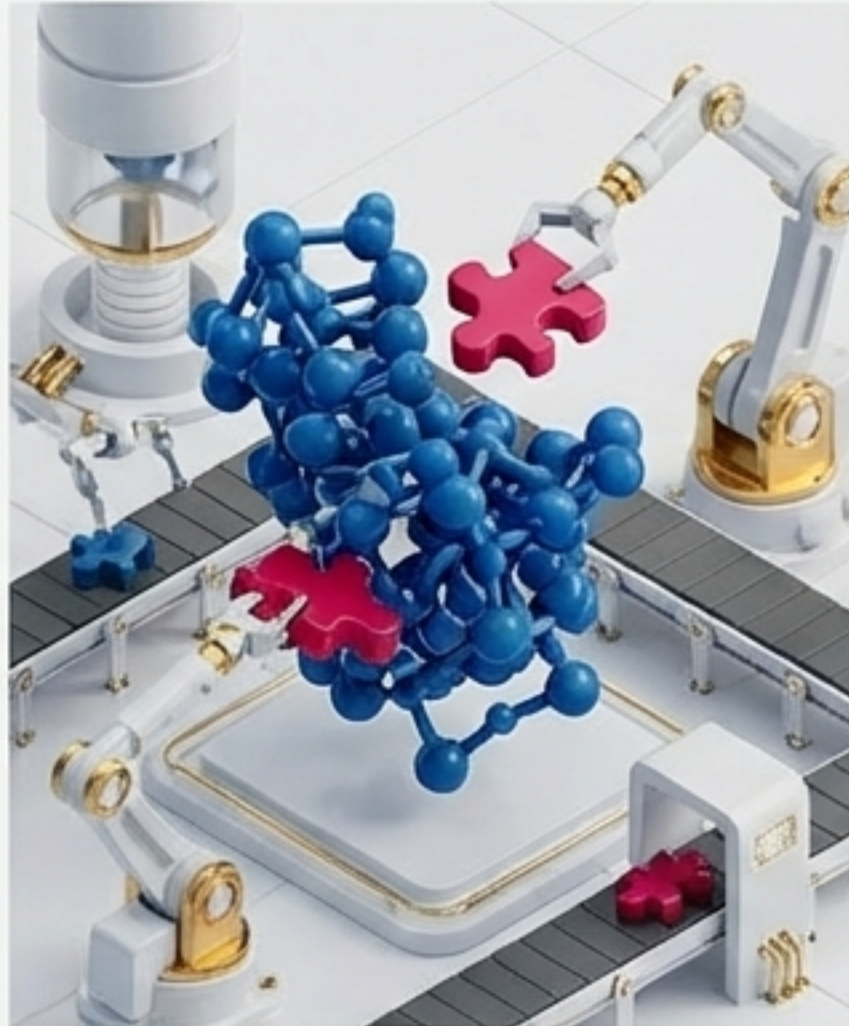
The Trojan Horse



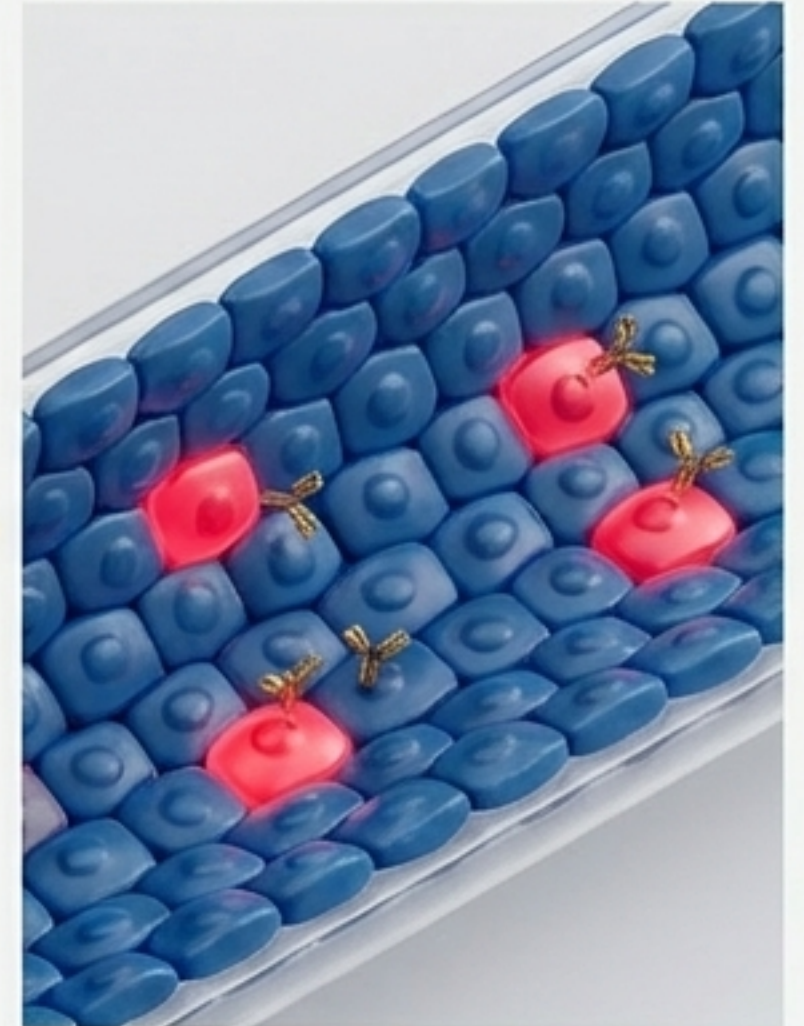
1. The Diet: Alien Sugar enters the body.



2. The Gut: Bacteria cut the sugar free.



3. The Factory: Our cells unknowingly use the alien sugar as building materials.

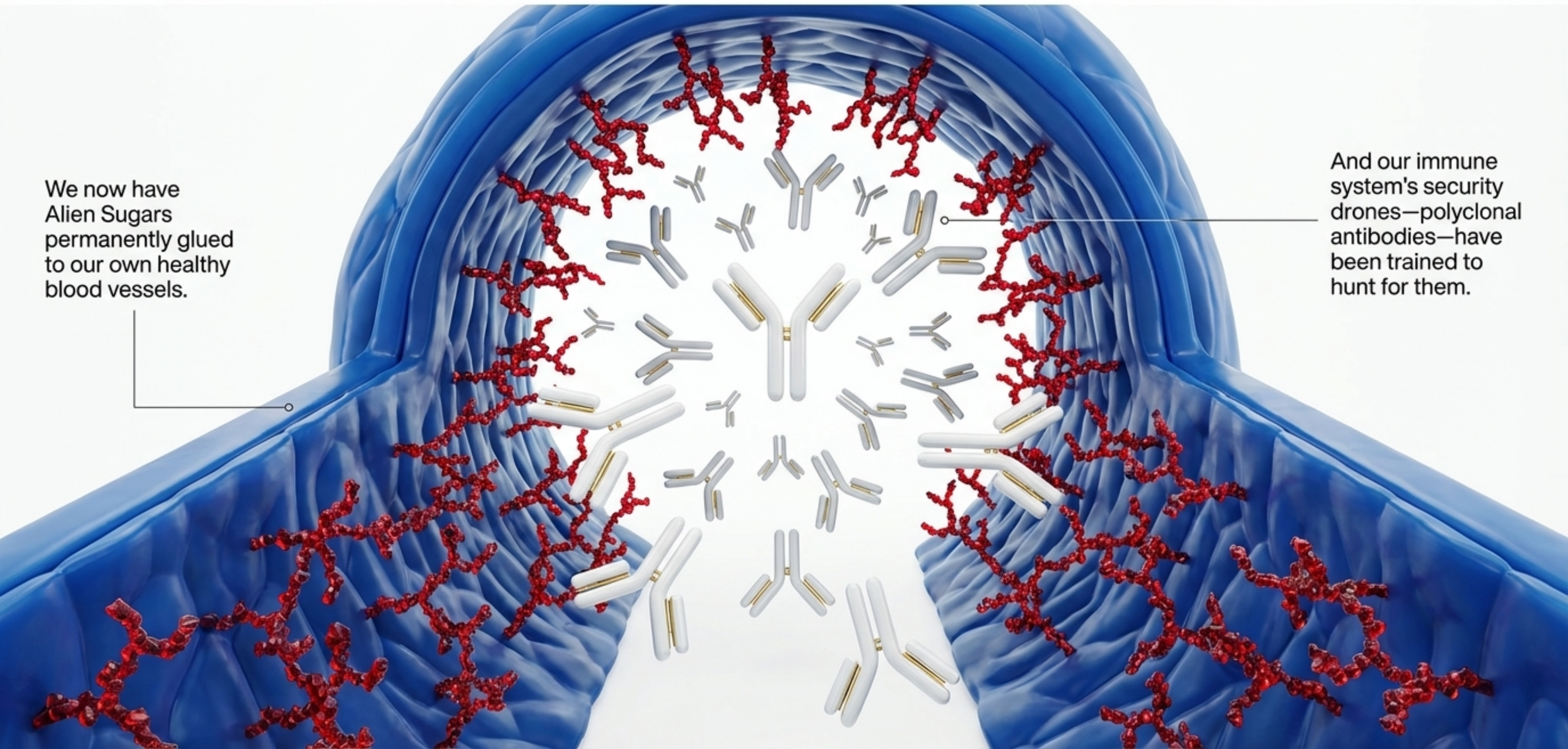


4. The Vessel: We decorate the delicate inner lining of our blood vessels with an alien target.

The Alarm Sounds

We now have Alien Sugars permanently glued to our own healthy blood vessels.

And our immune system's security drones—polyclonal antibodies—have been trained to hunt for them.




Childhood Priming

How the body learns to hate the color red.



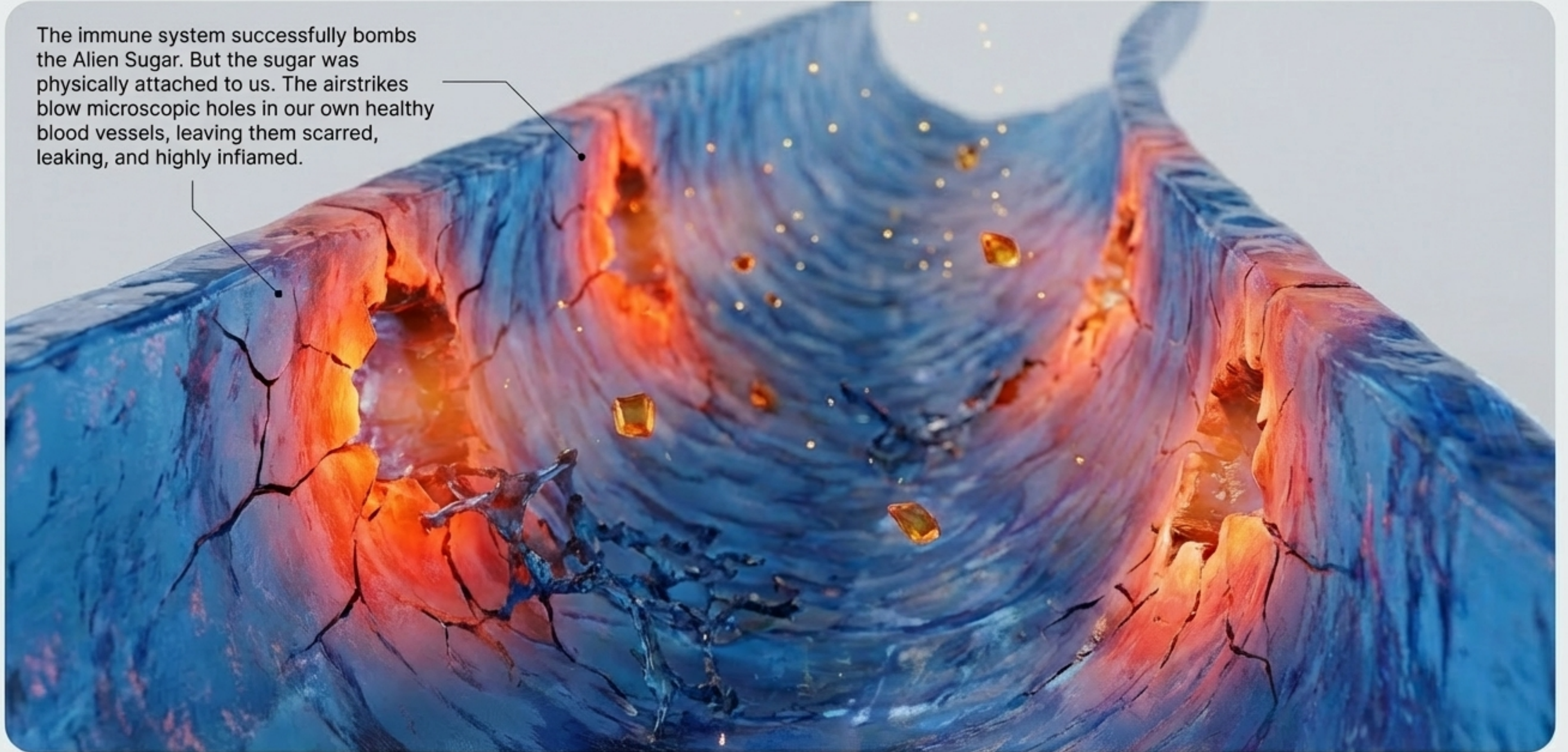
Xenosialitis: The Microscopic War



As blood rushes through your arteries, the security drones spot the Alien Sugars on your vessel walls. They lock on and call in biological airstrikes (The Complement System) to destroy the invader.

Collateral Damage

The immune system successfully bombs the Alien Sugar. But the sugar was physically attached to us. The airstrikes blow microscopic holes in our own healthy blood vessels, leaving them scarred, leaking, and highly inflamed.



The Plaque Forms



The Breach

Immune clean-up cells (macrophages) rush into the bomb craters to repair the damage.



The Trap

The cells get trapped beneath the surface lining, swell up with cholesterol, and die.

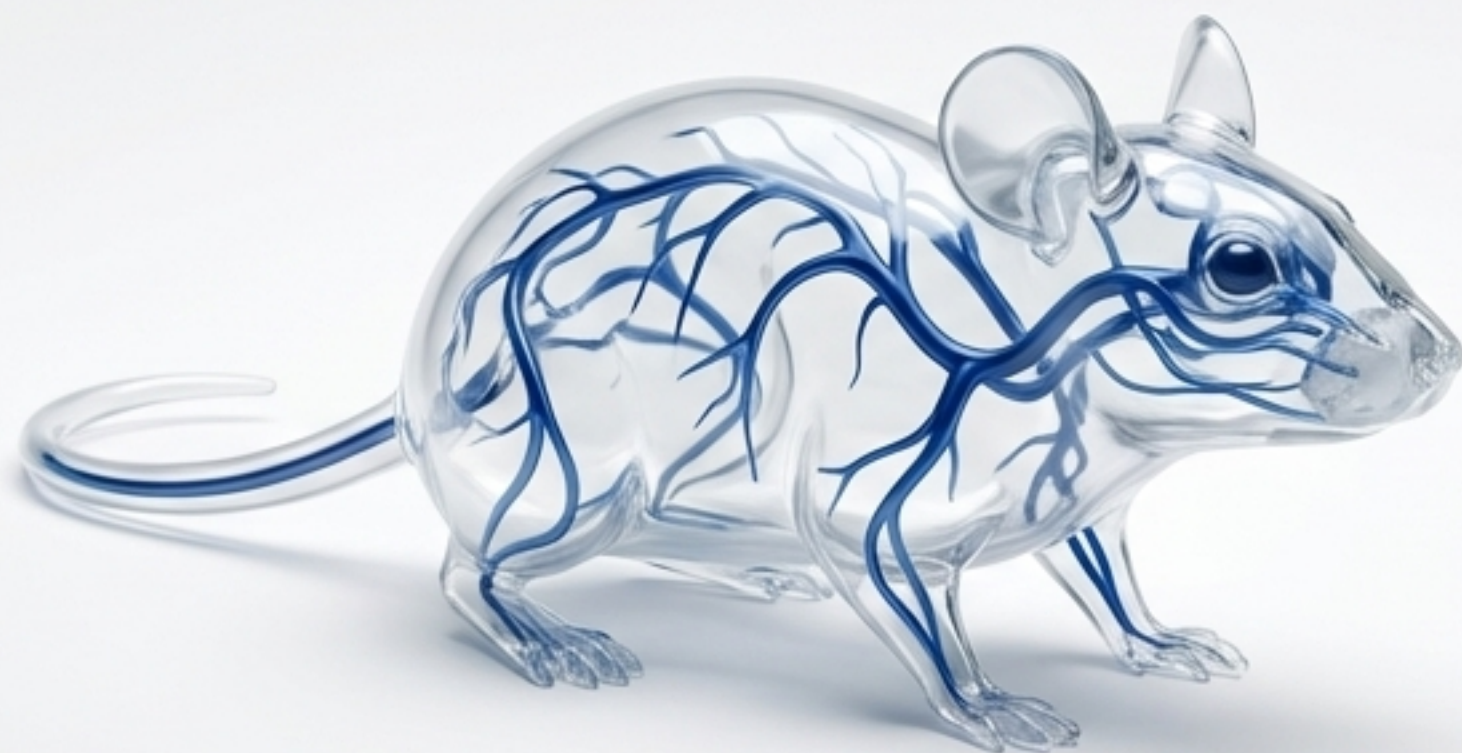


The Roadblock

Over decades, this graveyard of dead immune cells builds into a massive, deadly roadblock: an atherosclerotic plaque.

The Proof: Genetically Engineered Mice

Normal Mouse



Retains the CMAH gene.
Arteries remain completely clear.

Humanized Mouse (CMAH Broken)



Diet with **ZERO** red meat ■■
= **1.9x** more arterial plaque.

Diet **WITH** red meat = ■■
2.4x more arterial plaque.

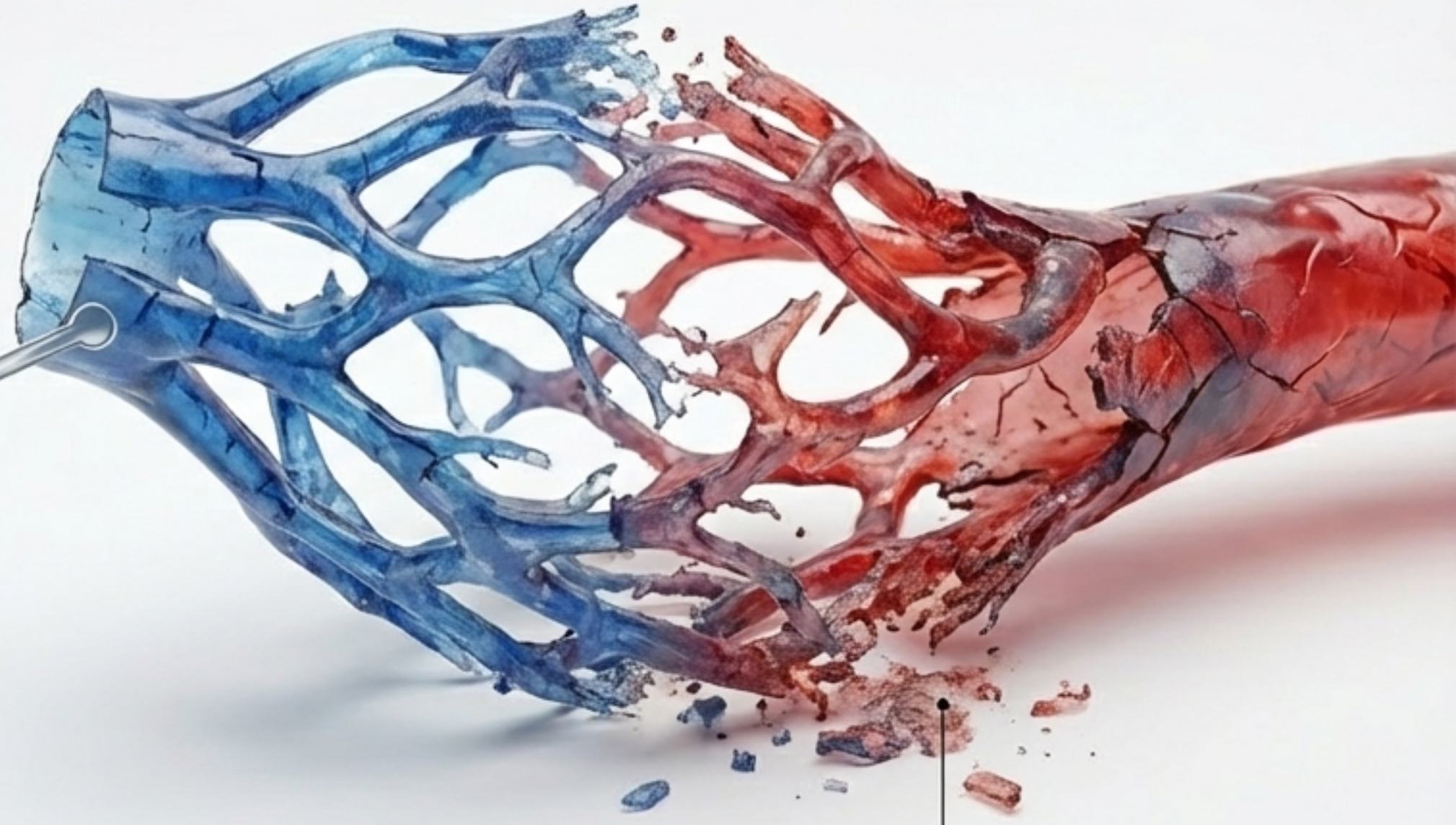
By mimicking the exact human mutation, scientists proved that simply possessing the broken gene nearly doubles heart disease. Eating the Alien Sugar triggers a massive 2.4-fold acceleration.

The Earlobe Clue



Frank's Sign:

Doctors have long known that a deep diagonal crease in the earlobe is a major predictor of heart disease.



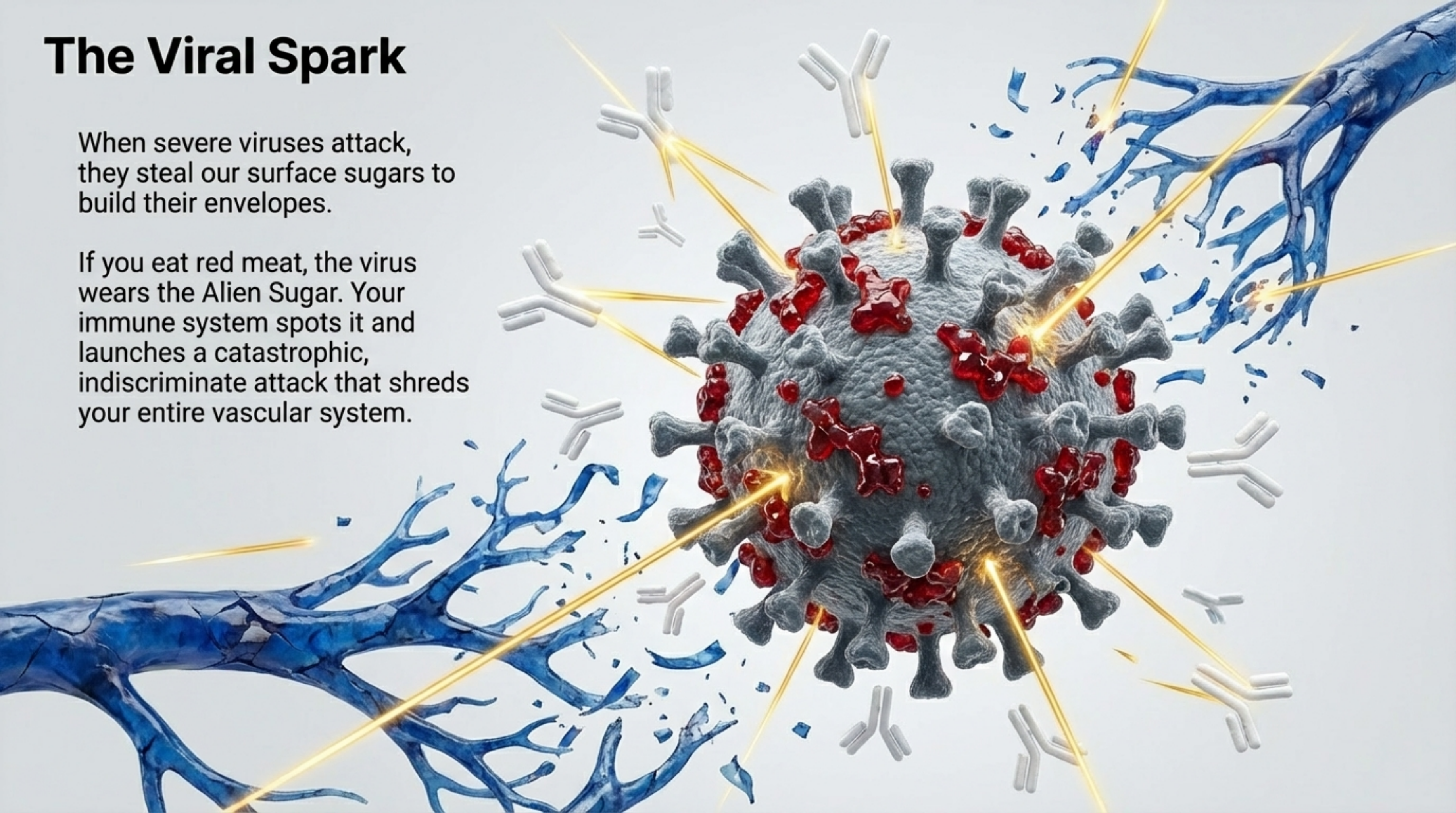
Microvascular Degradation:

The exact same immune bombs shredding your heart arteries are systematically degrading the tiny microvessels in your skin.

The Viral Spark

When severe viruses attack, they steal our surface sugars to build their envelopes.

If you eat red meat, the virus wears the Alien Sugar. Your immune system spots it and launches a catastrophic, indiscriminate attack that shreds your entire vascular system.



The Grand Illusion



**2.5 Million-Year-Old
Mutation**



**The Modern
Diet Trap**



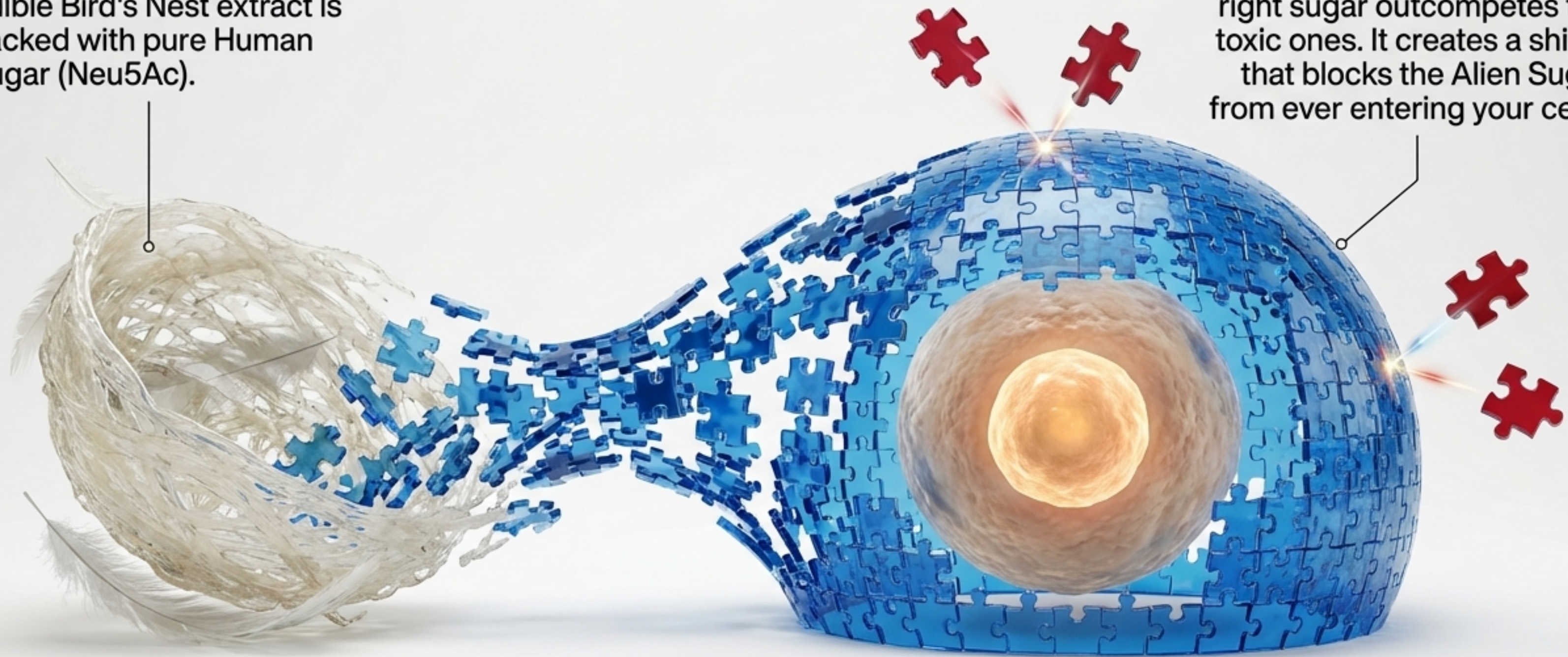
**The
Autoimmune War**

Evolutionary Past + Modern Diet = The Ultimate Biological Trap. You feed a molecular illusion that turns your immune system into your own worst enemy.

Hope on the Horizon: The Blue Shield

Scientists discovered that Edible Bird's Nest extract is packed with pure Human Sugar (Neu5Ac).

Flooding the body with the right sugar outcompetes the toxic ones. It creates a shield that blocks the Alien Sugar from ever entering your cells.



The Future of Food: Enzymatic Washing

We can use the exact same scissor-enzymes found in our gut bacteria at the meat processing plant.

By washing the meat before it reaches the grocery store, we strip away the Alien Sugar—allowing us to eat the meat without triggering the microscopic war.



The Ghost in the Machine

Heart disease isn't just a consequence of modern laziness or dietary fat. It is an ancient evolutionary ghost, hiding in plain sight on your dinner plate.

